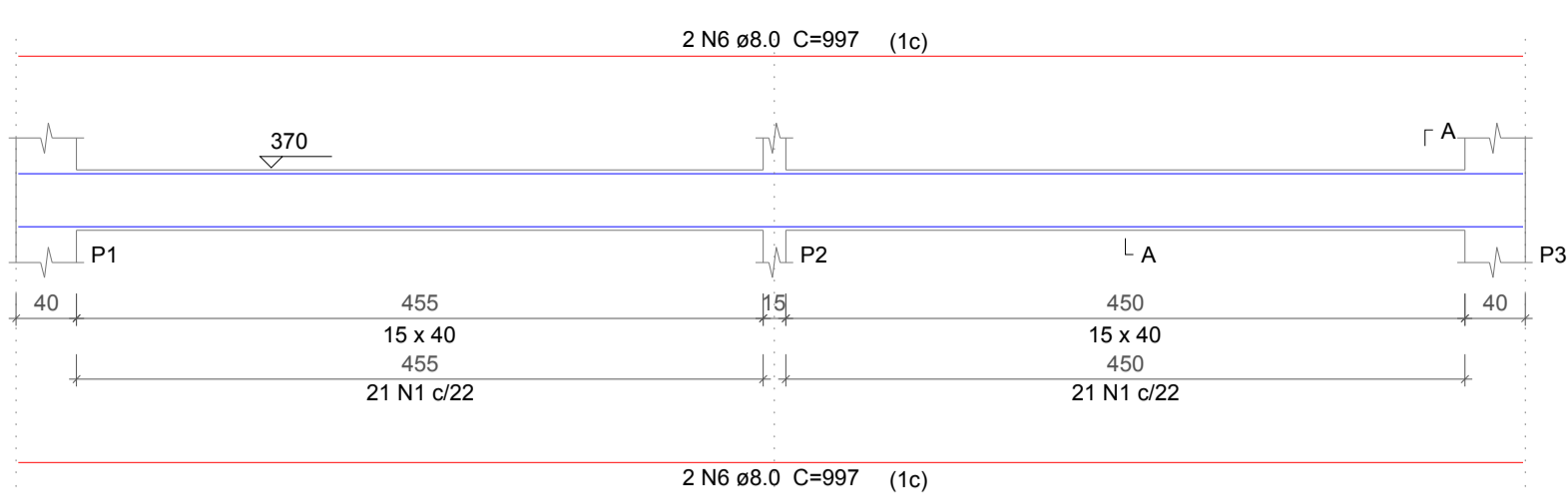


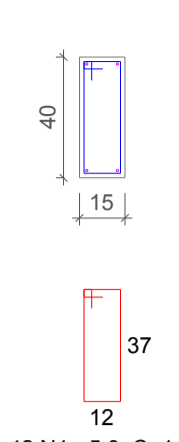
VT-1

ESC 1:50



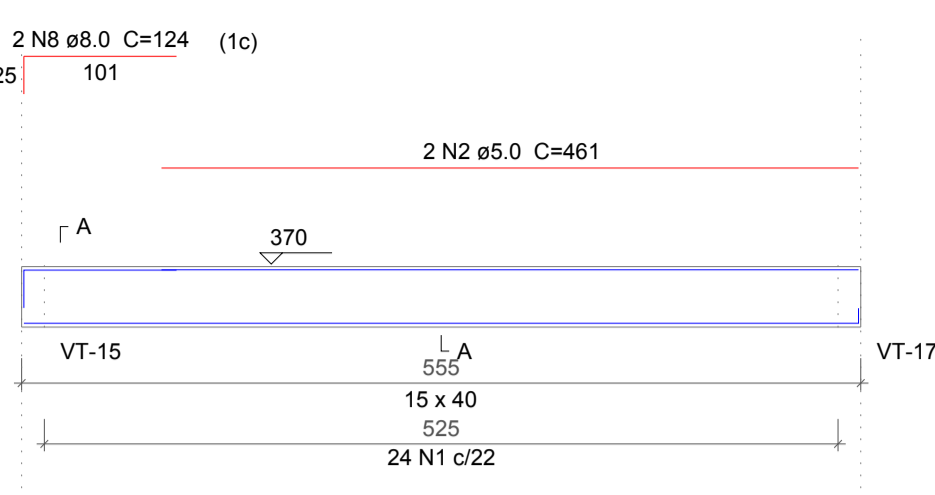
SEÇÃO A-A

ESC 1:25



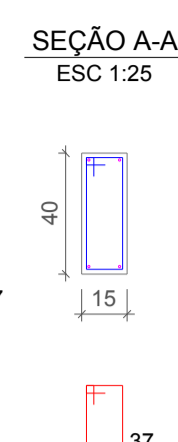
VT-2

ESC 1:50



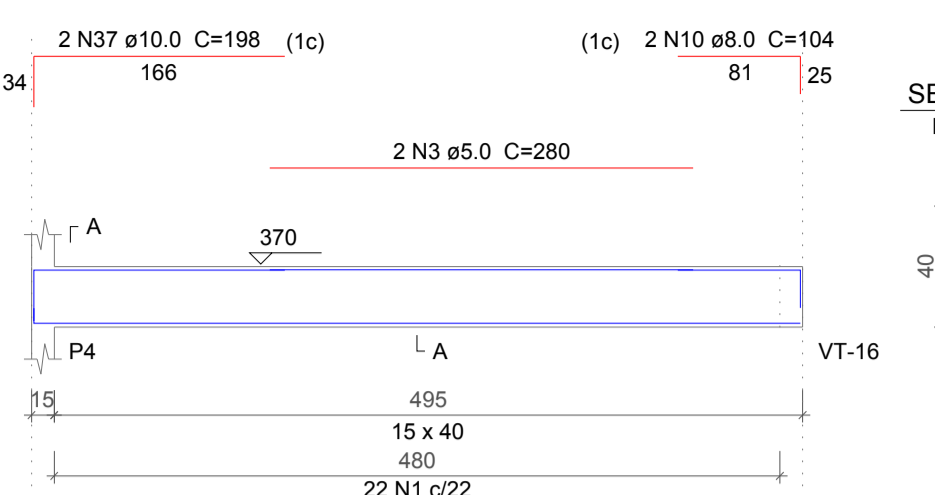
SEÇÃO A-A

ESC 1:25



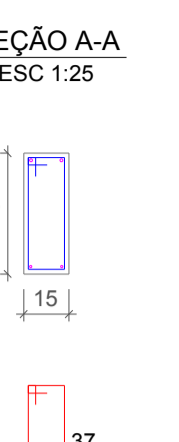
VT-3

ESC 1:50



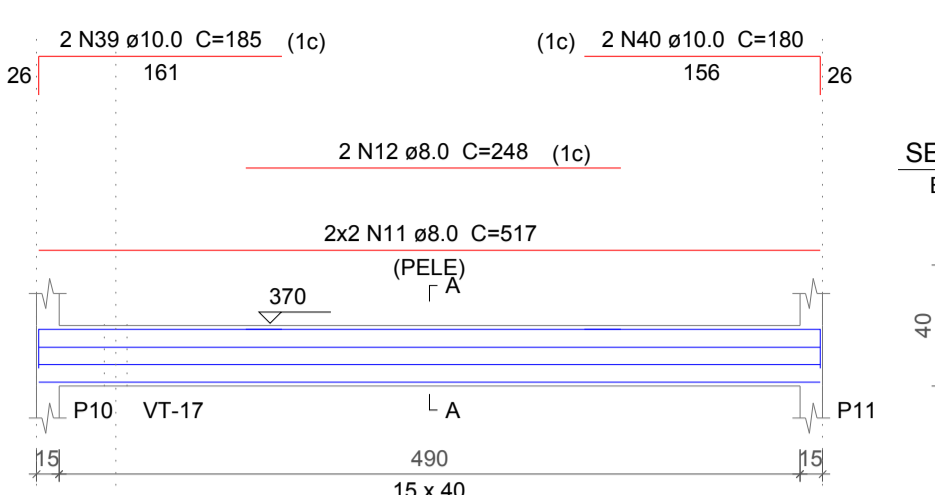
SEÇÃO A-A

ESC 1:25



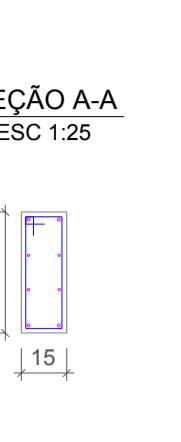
VT-4

ESC 1:50



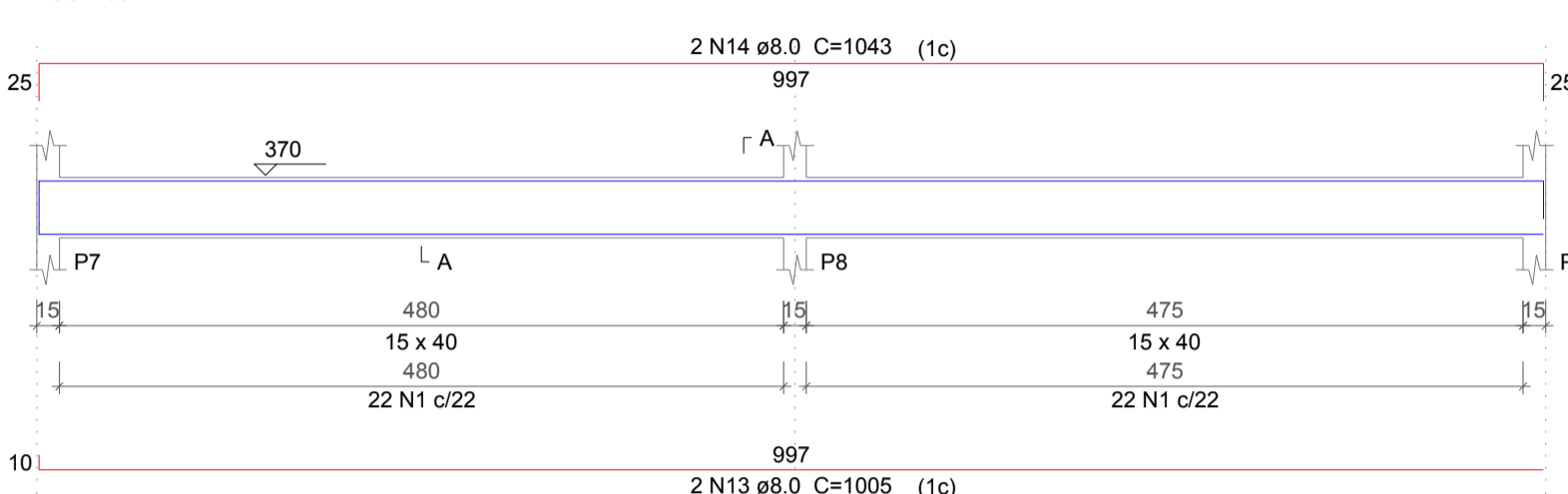
SEÇÃO A-A

ESC 1:25



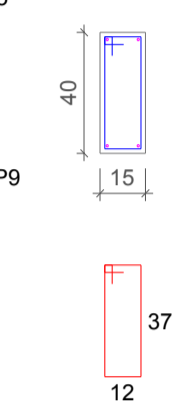
VT-5

ESC 1:50



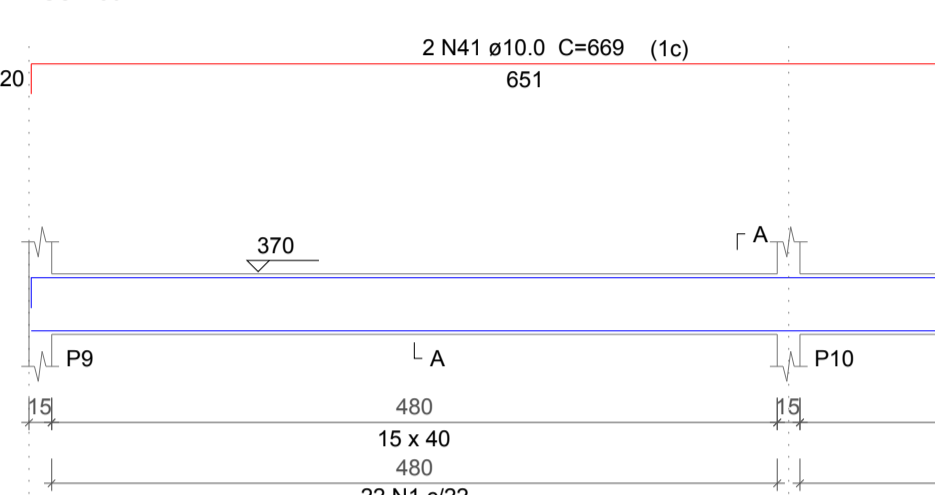
SEÇÃO A-A

ESC 1:25



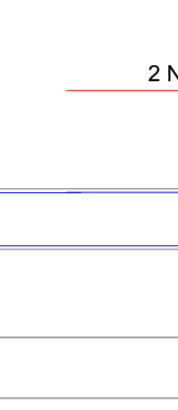
VT-6

ESC 1:50



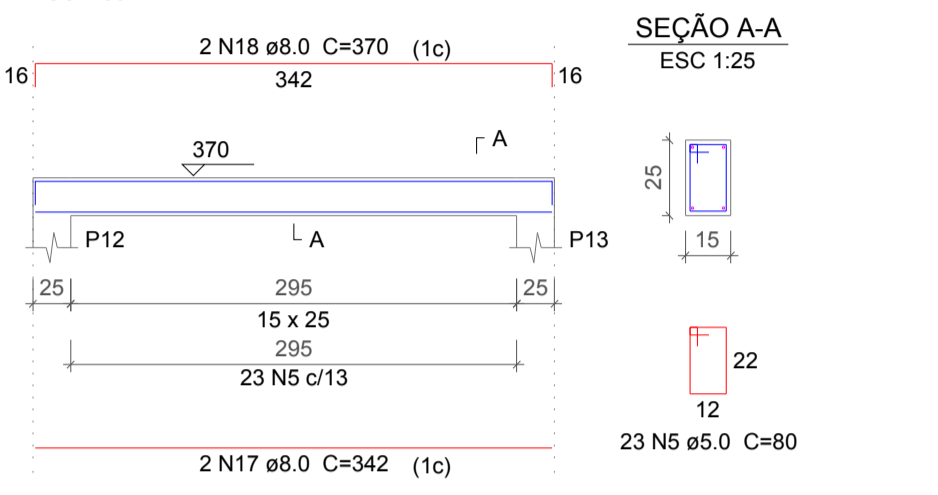
SEÇÃO A-A

ESC 1:25



VT-7

ESC 1:50



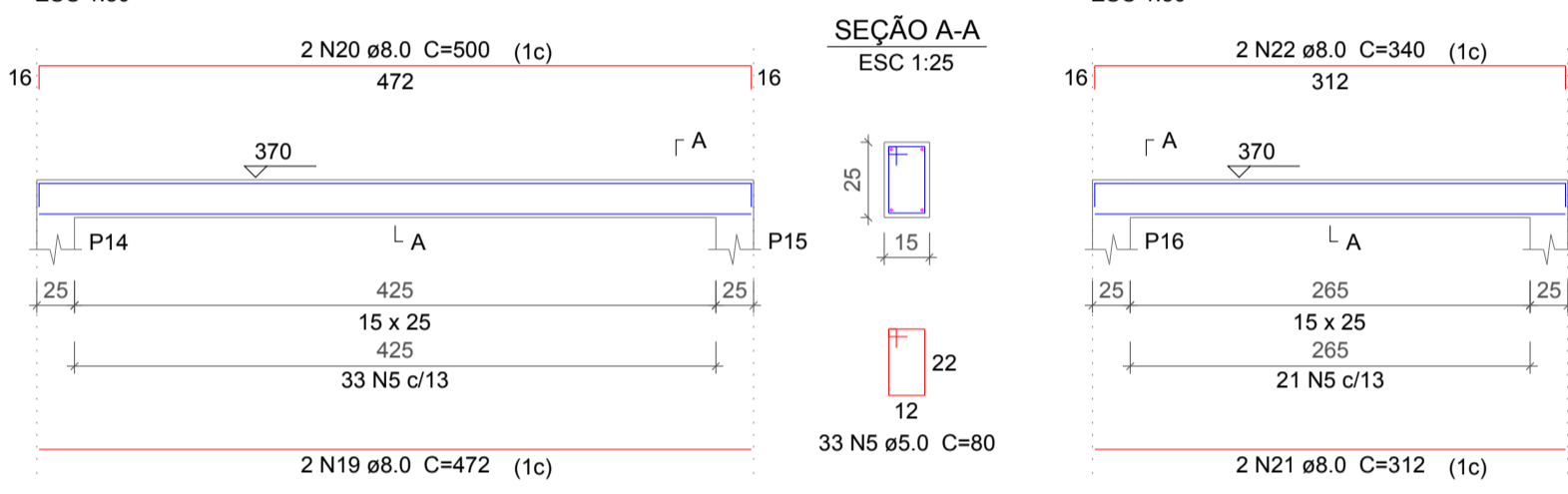
SEÇÃO A-A

ESC 1:25



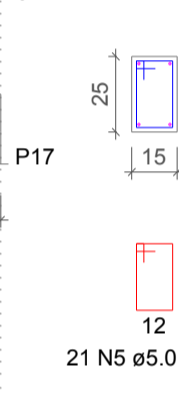
VT-8

ESC 1:50



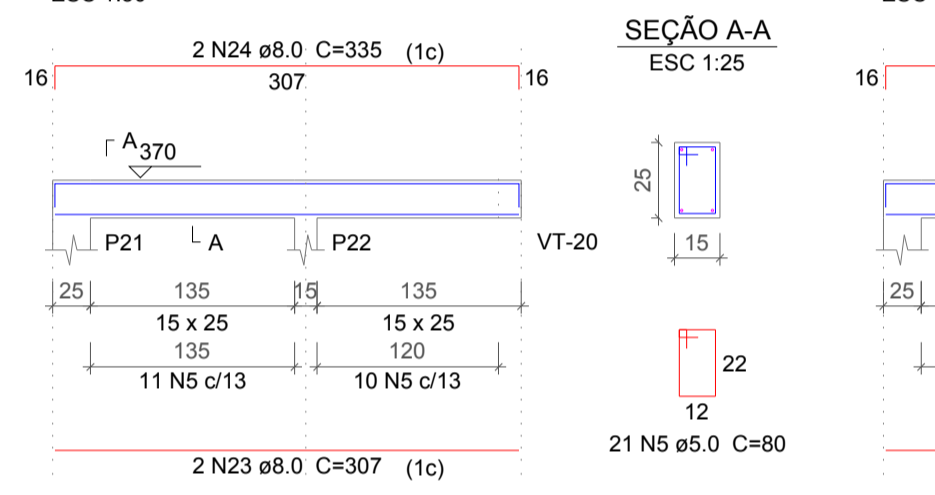
SEÇÃO A-A

ESC 1:25



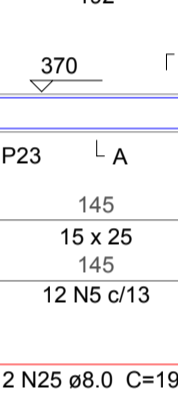
VT-9

ESC 1:50



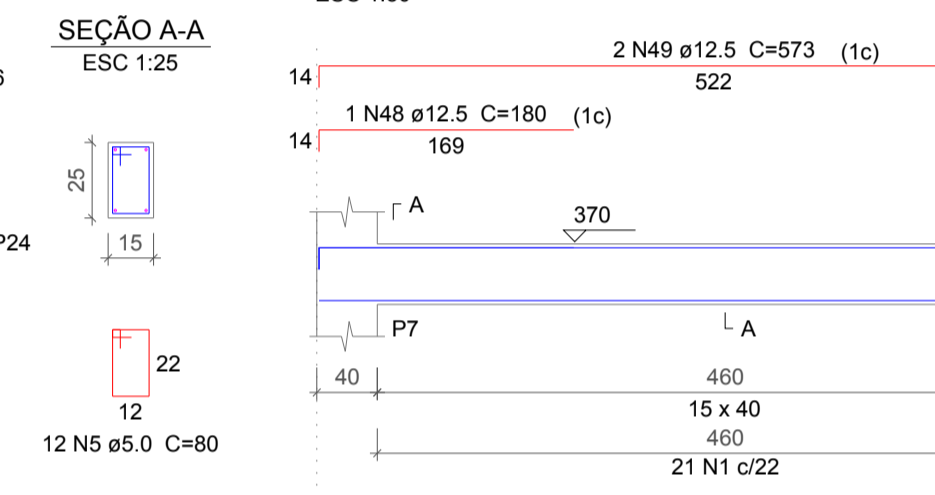
SEÇÃO A-A

ESC 1:25



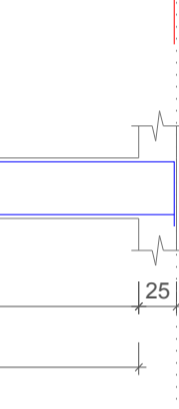
VT-10

ESC 1:50



SEÇÃO A-A

ESC 1:25



VT-11

ESC 1:50



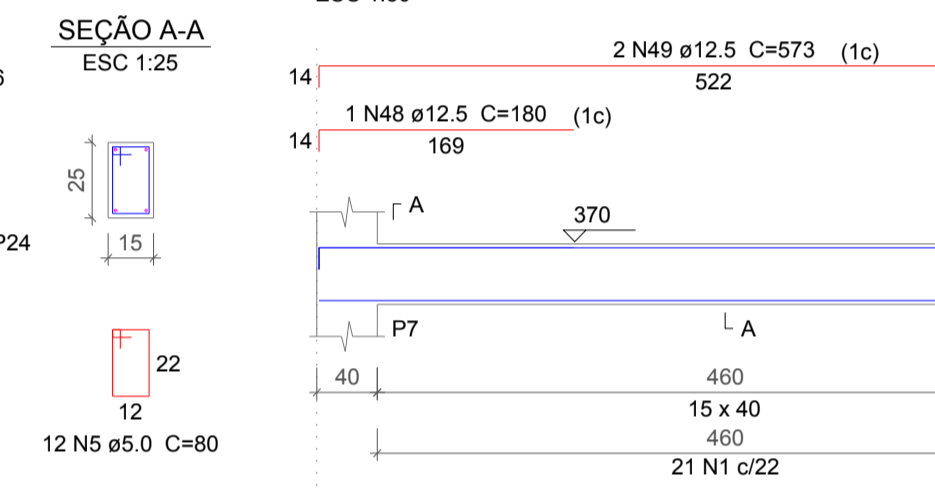
SEÇÃO A-A

ESC 1:25



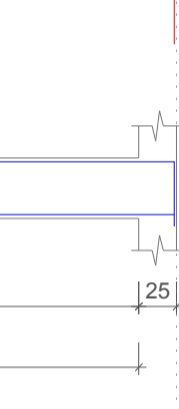
VT-12

ESC 1:50



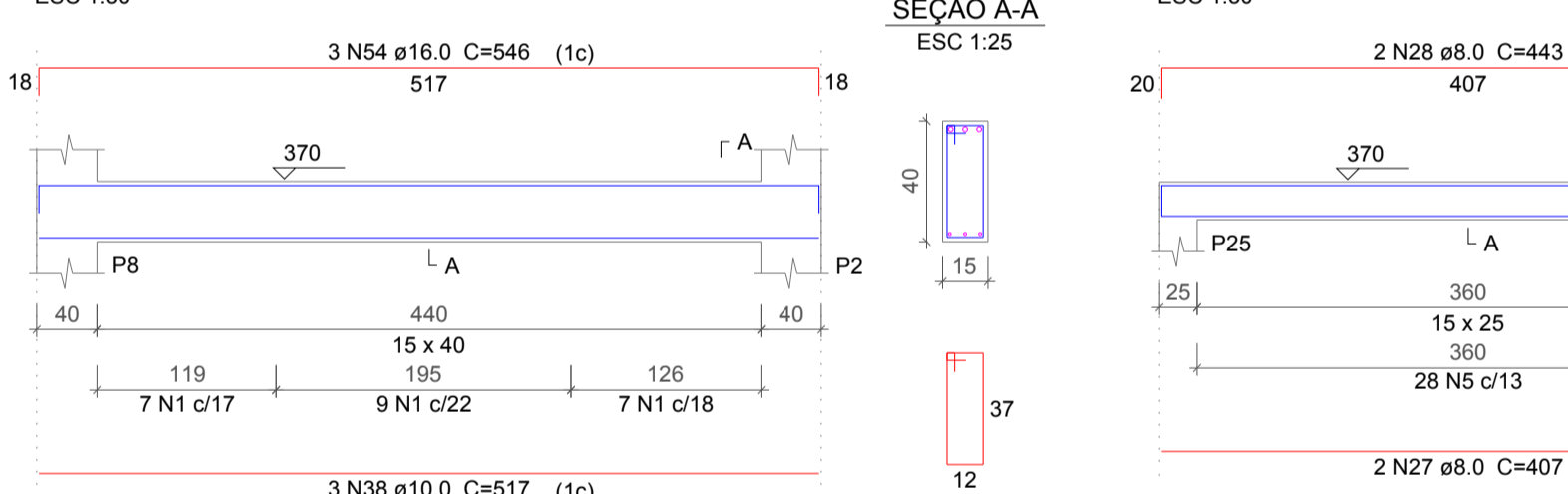
SEÇÃO A-A

ESC 1:25



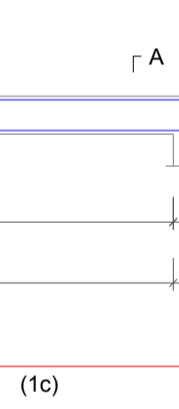
VT-13

ESC 1:50



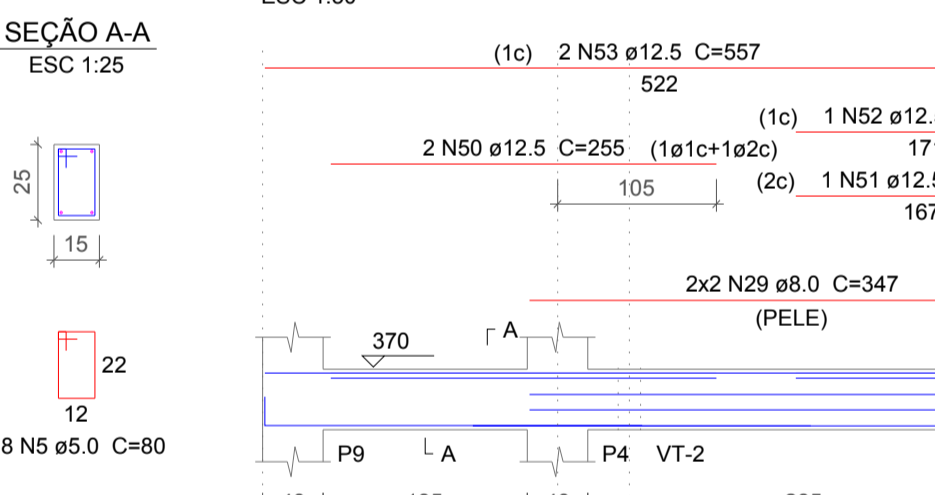
SEÇÃO A-A

ESC 1:25



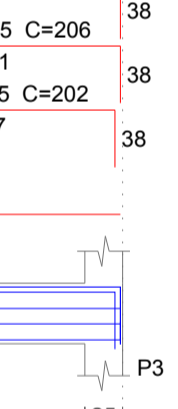
VT-14

ESC 1:50



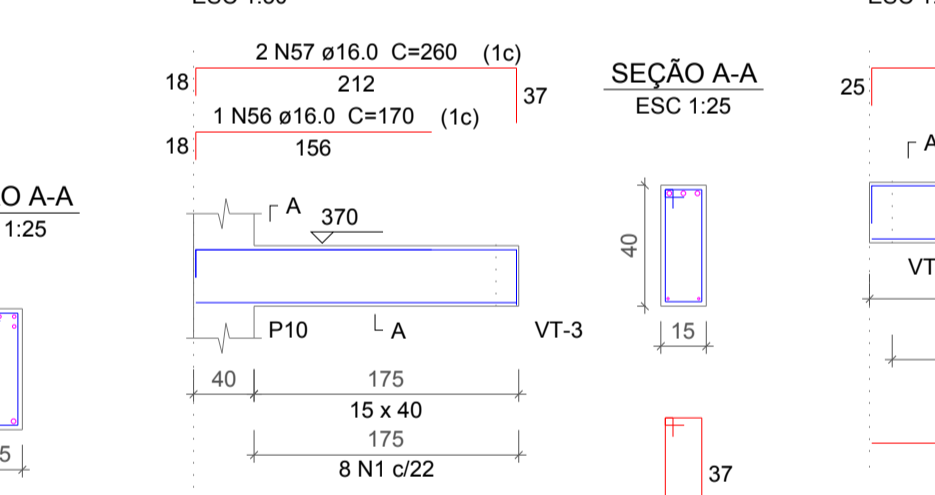
SEÇÃO A-A

ESC 1:25



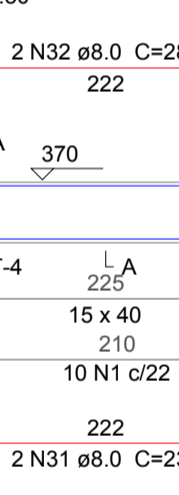
VT-15

ESC 1:50



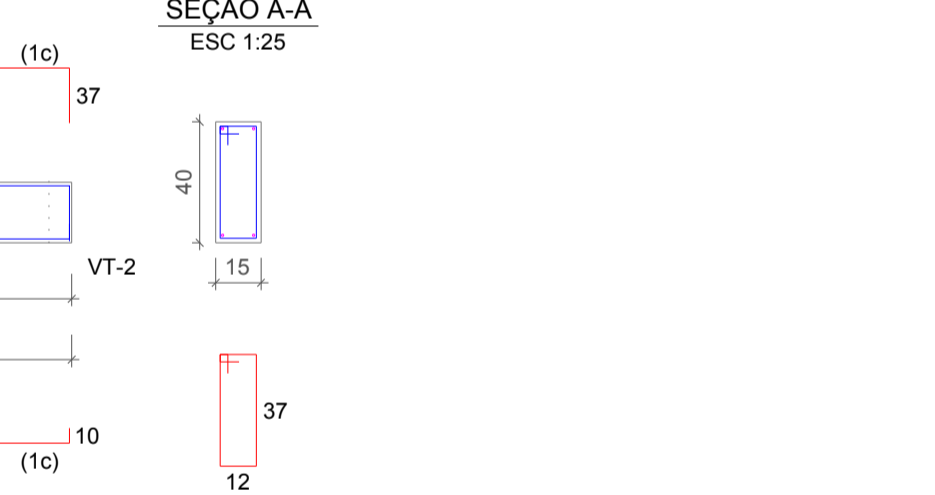
SEÇÃO A-A

ESC 1:25



VT-16

ESC 1:50



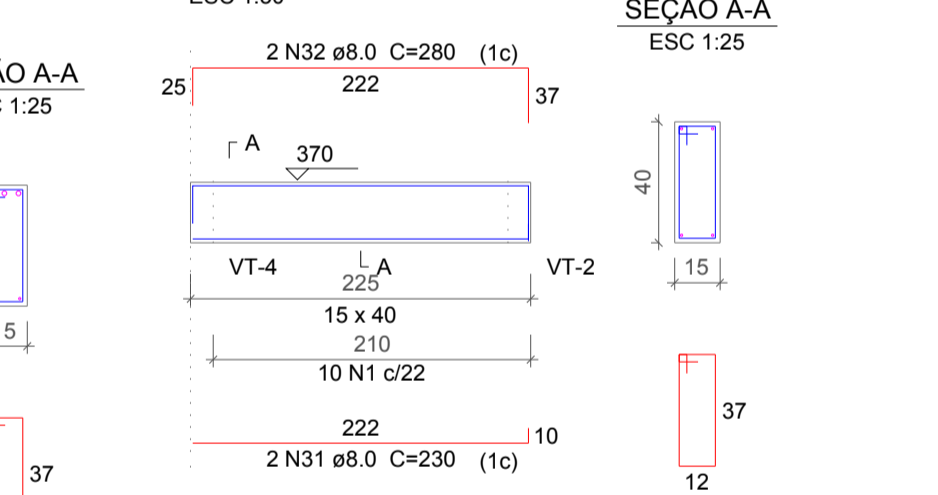
SEÇÃO A-A

ESC 1:25



VT-17

ESC 1:50



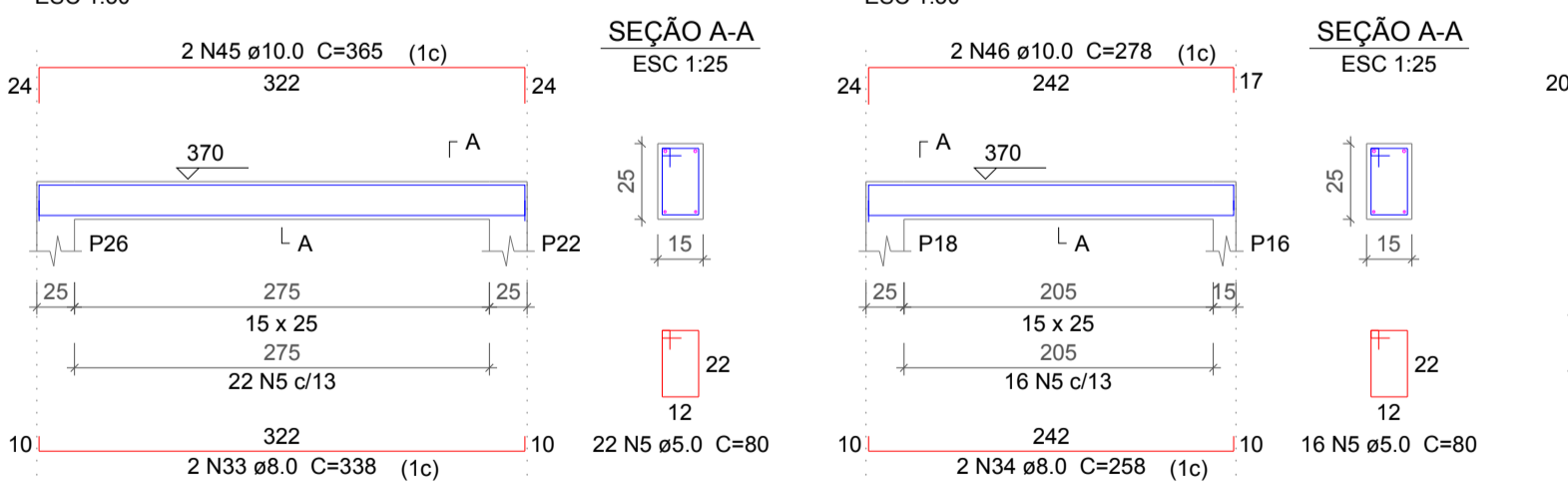
SEÇÃO A-A

ESC 1:25



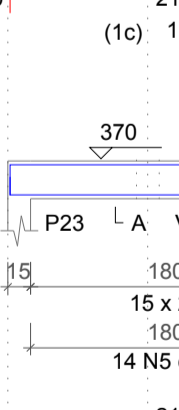
VT-18

ESC 1:50



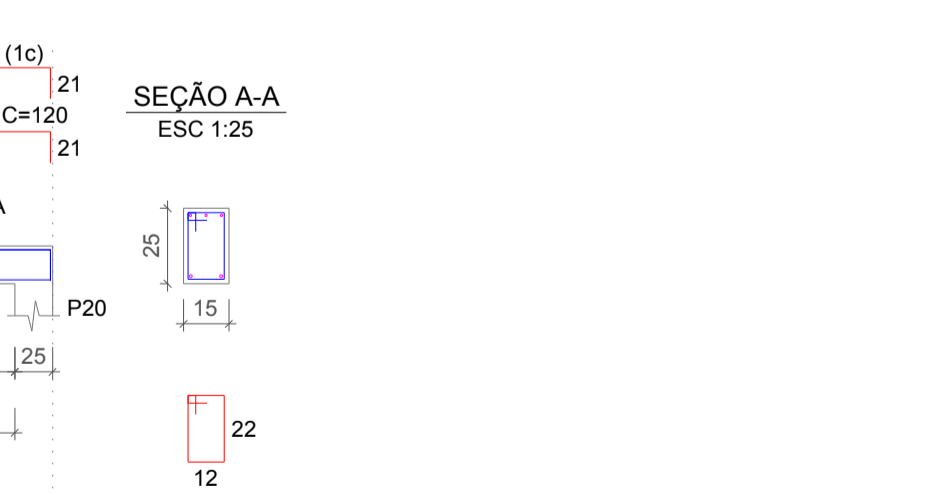
SEÇÃO A-A

ESC 1:25



VT-19

ESC 1:50



SEÇÃO A-A

ESC 1:25



VT-20

ESC 1:50



SEÇÃO A-A

ESC 1:25



Relação do aço

VT-4	VT-5	VT-6
VT-7	VT-8	VT-9
VT-10	VT-11	VT-12
VT-13	VT-14	VT-15
VT-16	VT-17	VT-18
VT-19	VT-20	VT-21

AÇO	N	DIAM	Q	UNIT (cm)
CA60	1	5.0	327	1
	2	5.0	2	461
	3	5.0	2	280
	4	5.0	2	225
	5	5.0	190	80
CA50	6	8.0	4	997
	7	8.0	2	560
	8	8.0	2	124
	9	8.0	2	515
	10	8.0	2	104
	11	8.0	4	517
	12	8.0	2	248
	13	8.0	2	1005
	14	8.0	2	1043
	15	8.0	2	1012
	16	8.0	2	179
	17	8.0	2	342
	18	8.0	2	370
	19	8.0	2	472
	20	8.0	2	500
	21	8.0	2	312
	22	8.0	2	340
	23	8.0	2	307
	24	8.0	2	335
	25	8.0	2	192
	26	8.0	2	220
	27	8.0	2	407
	28	8.0	2	443
	29	8.0	4	347
	30	8.0	2	220
	31	8.0	2	230
	32	8.0	2	280
	33	8.0	2	338
	34	8.0	2	258
	35	8.0	1	120
	36	8.0	2	254
	37	10.0	2	198
38	10.0	5	517	
39	10.0	2	185	
40	10.0	2	180	
41	10.0	2	669	
42	10.0	2	522	
43	10.0	1	223	
44	10.0	2	394	
45	10.0	2	365	
46	10.0	2	278	
47	10.0	2	227	
48	12.5	1	180	
49	12.5	2	573	
50	12.5	2	255	
51	12.5	1	202	
52	12.5	1	206	
53	12.5	2	557	
54	16.0	3	546	
55	16.0	2	26	
56	16.0	1	2	
57	16.0	2	1	